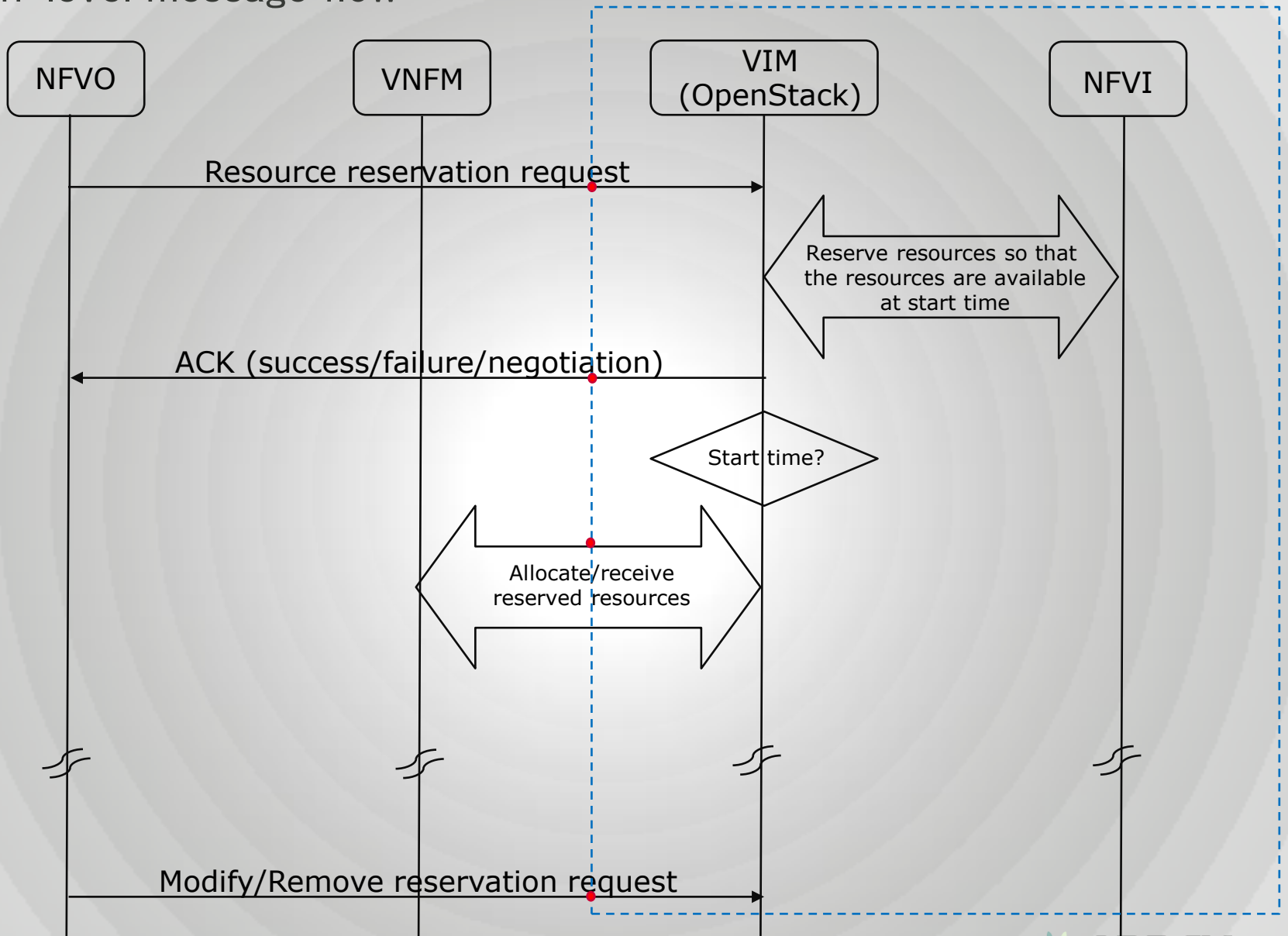


High-level message flow



Information element

- Tenant name (if doesn't exist, create new)
- Virtual container e.g. VM ID (to identify a VM in VIM)
- VM image name (to be used during instantiation)
- vNIC attributes (to be attached to the VM)
 - ID, network bandwidth
- flavor_id (hardware template ID. If doesn't exist, create for the following for each VM)
 - CPU pinning (ON/OFF)
 - vCPU info (type, number)
 - min vCPU clock frequency
 - # of vCPUs
 - Host type: Physical machine architecture
 - NUMA on/off
 - pCPU type (to where the vCPU should be allocated)
 - DPDK ON/OFF
 - VLAN attributes
 - SR-IOV ON/OFF
 - SR-IOV Device name
- Memory
- Storage attributes
- Inter VNFc connections attributes
- Permitted communication latency value

resource reservation request

- Affinity rules (manual at the beginning)
- VL (connection point) attributes
 - End-Point type (IP etc.)
 - EP value (IP address etc.)
 - VL NW bandwidth
- **Usage start/end time**
- Zone ID
- VNFM ID

Information element

resource reservation reply

- ACK
 - VM ID
 - Reservation ID (VM)
 - Ingress/Egress point/Connection Point (CP) ID
 - Reservation ID (VL)
 - Error Message

Purpose is to determine minimum Information elements to perform
Resource reservation